

ROLLING RIVER SCHOOL DIVISION – 2024-2025 PROPOSED BUDGET

INVITATION TO VIRTUAL PUBLIC BUDGET PRESENTATION

6:00 p.m. Wednesday, March 6, 2024

Visit <https://www.rrsd.mb.ca>

Click on the Budget Presentation link to participate.

REVENUE HIGHLIGHTS

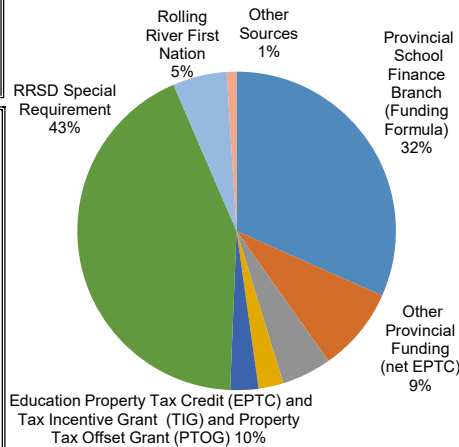
- **Provincial Funding**
 - Funding of School Formula - no increase
 - Operating Support Funding - increase of \$259,000 (2.0 %)
 - New Funding for Universal Nutrition Program (\$143,000)
 - Maintain Tax Incentive Grant and Property Tax Offset Grant
- **Rolling River First Nation tuition** - increased revenue
- **School of Choice Fees** - decreased enrollment from other school divisions
- **Other Miscellaneous Revenues** – increase

EXPENDITURE HIGHLIGHTS

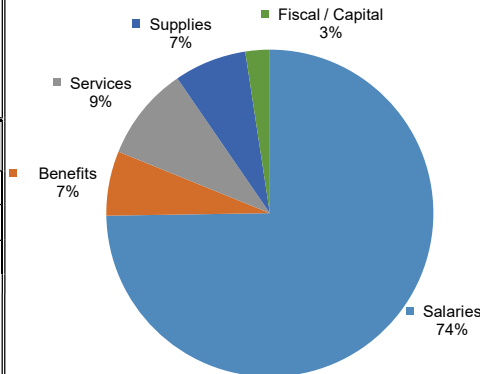
- Maintain all staffing levels and programs
- General salary increase and pay scale adjustments
- Increase in benefits expense (CPP, EI and WCB rates)
- Increase in fees to other school divisions for programs not offered in RRSD (Vocational and French Immersion)(enrollment and fee increase)
- Increase IT expense (Continue to upgrade school technology equipment)
- Adjust supplies and services expenses (price increases)
- Maintain utilities and fuel expense (rate increase)
- Increase insurance expense (rate increase)
- Increase financing for division funded capital projects
- Increase school bus replacement expense (price increase)

REVENUE	Budget 2023-2024	Budget 2024-2025	% Increase (Decrease)
Provincial Education	\$9,087,010	\$9,041,390	-0.5%
Other Provincial (net EPTC)	\$1,996,030	\$2,443,650	22.4%
Ed. Prop. Tax Credit (EPTC)	\$1,446,005	\$1,446,005	8.0%
Tax Incentive Grant	\$717,685	\$717,685	
Property Tax Offset Grant	\$817,725	\$817,725	
Special Requirement	\$11,113,265	\$12,240,970	
Rolling River First Nation	\$1,530,935	\$1,567,900	2.4%
Other Sources	\$265,000	\$286,100	8.0%
Total Revenue	\$26,973,655	\$28,561,425	5.9%
EXPENDITURE	Budget 2023-2024	Budget 2024-2025	% Increase (Decrease)
Regular Instruction	\$16,106,510	\$16,737,935	3.9%
Student Support Services	\$3,615,585	\$3,906,005	8.0%
Community Education	\$30,390	\$25,890	-14.8%
Divisional Administration	\$939,270	\$964,420	2.7%
Instructional Support	\$523,630	\$542,025	3.5%
Transportation	\$2,015,375	\$2,076,405	3.0%
Operations & Maintenance	\$3,253,395	\$3,385,745	4.1%
Fiscal & Capital	\$797,500	\$923,000	15.7%
Total Expenditure	\$27,281,655	\$28,561,425	4.7%
DEFICIT	-\$308,000		

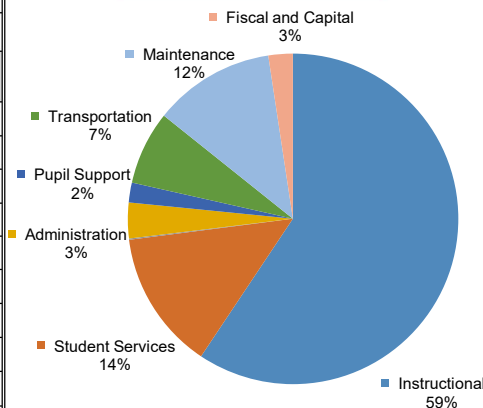
SOURCES OF REVENUE



EXPENSES BY OBJECT



EXPENSES BY FUNCTION



SCHOOL DIVISION PROPERTY TAXES, SPECIAL LEVY AND MILL RATE

Property Tax	2023	Proposed 2024	% Change
RRSD Special Levy	\$12,440,427	\$13,076,793	5.1%
Portioned Assessment	\$1,225,809,120	\$1,239,885,380	1.1%
RRSD Mill (Tax) Rate	10.1	10.5	3.9%

The portion of the assessed value of a property that is taxed depends on the category of property.

The percentage of the property's assessed value that is taxed is:

Residential 45% Farmland 26% Commercial 65%

Rolling River School Division school tax increase from 2023 to 2024 for properties valued at \$100,000 in 2023 and with no change in assessed property value.

Residential \$17.91 Farmland \$10.35 Commercial \$25.87

The School Tax Rebate will reduce the increase to property owners - 50% for Residential and Farm properties and 10% for Other properties.

Formula to calculate your school taxes A X B X C / D where:

A = the assessed value of the property **C** = the mill rate

B = the portion of the assessed value that is taxed **D** = 1000

2024 Education Property Tax Credits and Rebates

The Education Property Tax Credit (EPTC) Advance of \$350 is deducted from an individual's primary property's residential school division taxes and reduces the property owner's taxes prior to payment.	Seniors are eligible for the Education Property Tax Credit of \$350 plus a Seniors Education Property Tax Credit of up to \$250 plus the Seniors School Tax Rebate of up to \$235.	Property owners will receive a rebate of their education property taxes payable: 50% Rebate for residential and farm property 10% rebate for Commercial property Farmland Tax Rebate equal to 40% of the school property taxes paid to a maximum of \$2,500.
--	--	---

Enrollment	# Students	Change from Prior Year	Change in Students from Sept 2000	10-year Average – Change per year	5-year Average – Change per year
30-Sep-00	2306		-543	9.3	14.2
30-Sep-05	2041	-265			
30-Sep-10	1835	-206			
30-Sep-15	1701	-134			
30-Sep-20	1763	62			
30-Sep-24	1822	59	Estimate		